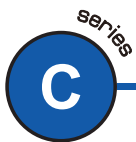




OWNER'S MANUAL



LOUDSPEAKERS

CE RoHS

AVVERTENZE



PER EVITARE IL RISCHIO DI SHOCK ELETTRICO
NON APRIRE IL COPERCHIO
NON USARE UTENSILI MECCANICI ALL'INTERNO
CONTATTARE UN CENTRO DI ASSISTENZA QUALIFICATO

PER EVITARE IL RISCHIO DI INCENDIO O DI SHOCK
ELETTRICO NON ESPORRE L'APPARECCHIATURA
ALLA PIOGGIA O ALL'UMIDITA'

PRECAUZIONI

Evitate di tenere i diffusori esposti per lungo tempo all'azione degli agenti atmosferici (umidità, forti variazioni di temperatura, eccesso di calore, ecc.);evitate l'accumulo di polvere e, per quanto possibile, proteggetele con il loro imballo originale per il trasporto.

Evitate di toccare il cono degli altoparlanti con qualsiasi oggetto e con le stesse mani: si potrebbero arrecare danni irreparabili.

Evitare di orientare i microfoni nella stessa direzione degli altoparlanti: potrebbero generare fastidiosi inneschi (effetto Larsen) che danneggerebbero gli altoparlanti.

Per evitare spiacevoli e costosi inconvenienti usate solo cavi di collegamento originali.

Per la pulizia non usate solventi tipo acetone o alcool, che danneggerebbero la finitura esterna e le serigrafie dei pannelli.

#In caso di cattivo funzionamento di qualsiasi dispositivo del sistema affidatevi al più vicino centro di assistenza o ad un centro specializzato, evitando di provvedere personalmente.

WARNING



TO REDUCE THE RISK OF ELECTRIC SHOCK
DO NOT REMOVE COVER (OR BACK)
NO USER SERVICEABLE PARTS INSIDE
REFER SERVICING TO QUALIFIED SERVICE PERSONNEL

TO REDUCE THE RISK OF FIRE OR ELECTRIC
SHOCK DO NOT EXPOSE THIS EQUIPMENT
TO RAIN OR MOISTURE

PRECAUTIONS

#Avoid leaving the speakers exposed for long periods to adverse conditions (damp, wide variations in temperature, excessive heat, etc...); avoid dust building up and protect them as far as possible with their original packing during transport.

Avoid touching the cones of the loudspeakers with any object or with your hands, as this could cause irreparable damage.

Avoid pointing microphones in the direction of the speakers, as this could result in annoying feedback, which can damage speakers.

To avoid unpleasant (and costly) setbacks, make certain to use only original connector cables.

When cleaning the speakers, don't use solvents such as acetone or alcohol, which will damage the units' outer finish and the printing on the panels.

In the event of faulty operation of any component of the system, contact the nearest service centre or a specialized centre - never try to solve problems personally.

C-115SC

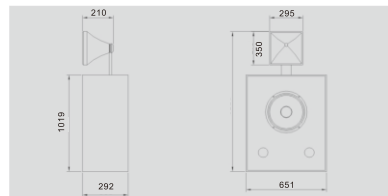
2-WAY Loudspeaker



C-115SC is two way frequency with superpower, wide-frequency designed. Applying to a cinema around 200 seats. Easy for installation by its pre-setting program, System could be driven by one or two channel power amplifier.

SPECIFICATIONS

Frequency Response	40Hz-20KHz
Long-term Power (RMS)	LF:400W,HF:40W
Directivity Angle	H90°°XV40°°
Crossover point	800Hz
Sensitivity	LF:99dB,HF:102dB
Impedance	LF:8 Ω ,HF:8 Ω
Connection	Clip line
Dimensions(WxDxH)	LF:651X292X1019MM HF:295X210X350MM
Low	15 INx1 (380mm)
High	1.75 INx1 (44mm)
N.W	LF:33Kg,HF:4.2Kg



C-215SC

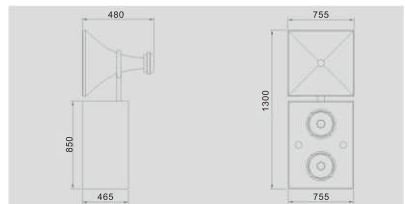
2-WAY loudspeaker



C-215SC is a classical full range 2-way loudspeaker. Suitable for all places, most popular in large as it's wonderful dynamic performance. The custom $\Phi 100\text{mm}$ HF speaker equipped with dual 15" LF 600-watt speaker makes higher sensitivity and wider frequency range.

SPECIFICATIONS

Frequency Response	40Hz-20KHz
Long-term Power (RMS)	LF:800W,HF:80W
Directivity Angle	H90°*XV40°
Crossover point	800Hz
Sensitivity	LF:102dB,HF:105dB
Impedance	LF:4 Ω ,HF:8 Ω
Connection	Clip line
Dimensions(WxDxH)	LF:755X465X850MM HF:755X480X405MM
Low	15 INx2 (380mm)
High	3 INx1 (75mm)
N.W	LF:44.4Kg,HF:12.5Kg



C-3215SC

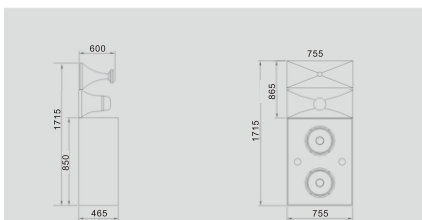
3-WAY Loudspeaker



C-3215SC consists of dual 15" LF speaker, dual 10" MF speaker and a Φ 100 HF speaker, which makes this cinema sound system have incomparable live resound effect, it's the best choice especially for large cinema. System could be driven by two or three channel power amplifier.

SPECIFICATIONS

Frequency Response	30Hz-20KHz
Long-term Power (RMS)	LF:800W,MF+HF:250W
Directivity Angle	H90°*XV40°
Crossover point	LF/MF:250Hz,HF:1.7KHz
Sensitivity	LF:102dB,MF+HF:106dB
Impedance	LF:4 Ω ,HF:4 Ω
Connection	Clip line
Dimensions(WxDxH)	LF:755X465X850MM MF+HF:755X600X865MM
Low	15 INx2 (380mm)
Mid	10 INx1 (260mm)
High	3 INx1 (75mm)
N.W	LF:45Kg,MF+HF:27.5Kg



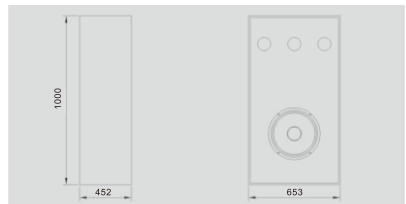
C-118SW

SUB-WOOFER Loudspeaker



SPECIFICATIONS

Frequency Response	30Hz-250Hz
Long-term Power (RMS)	600W
Sensiticity	98dB
Impedance	8 Ω
Connection	Clip line
Dimensions(WxDxH)	653X452X1000MM
Low	18 INx1 (460mm)
High	---
N.W	45Kg



C-218SW

SUB-WOOFER LOUDSPEAKER



C-218SW uses dual 18" 800-watt subwoofer speaker, making the LF output much stronger and bigger dynamic, more powerful, which meet kind of cinema's requirements.

SPECIFICATIONS

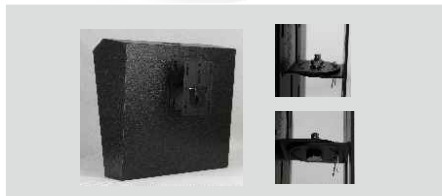
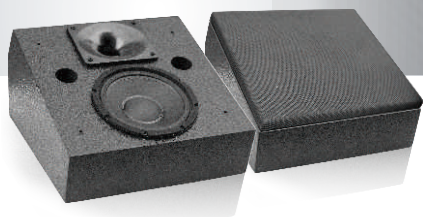
Frequency Response	25Hz-250Hz
Long-term Power (RMS)	1200W
Sensitivity	102dB
Impedance	4 Ω
Connection	Clip line
Dimensions(WxDxH)	1222X610X762MM
Low	18 INx2 (460mm)
High	---
N.W	81Kg





C-108SR

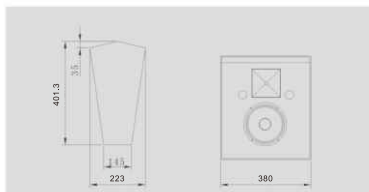
2-WAY Surround loudspeaker



C-108SR consists of one 8" LF and one Φ 34MM titanium coated HF speaker, applying to small cinema, its high sensitivity and smooth frequency make high performance surround.

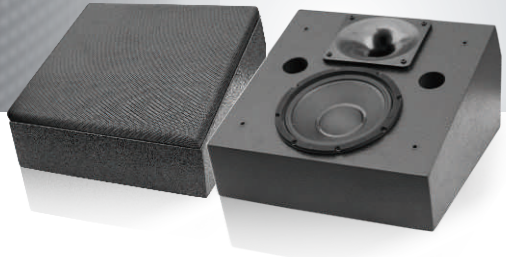
SPECIFICATIONS

Frequency Response	50Hz-20KHz
Long-term Power (RMS)	150W
Directivity Angle	H100°*XV90°°
Crossover Frequency	2.5KHz
Sensitivity	93dB
Impedance	8 Ω
Connection	Clip line
Dimensions(WxDxH)	380X401.3X223MM
Low	8 INx1 (210mm)
High	1.5 INx1 (34mm)
N.W	10.5Kg

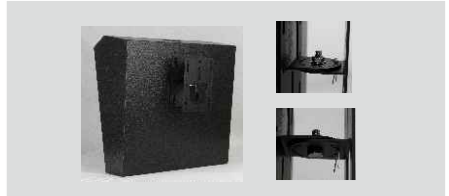


C-110SR

2-WAY Surround loudspeaker

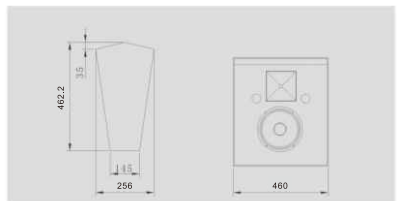


C-110SR consists of one 10" LF speaker and Φ 34mm titanium coated HF speaker with high sensitivity and wide frequency range design.

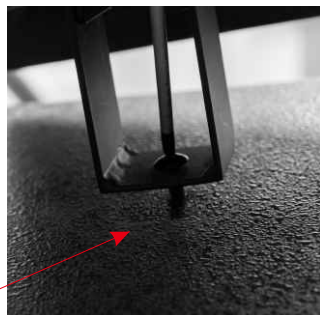
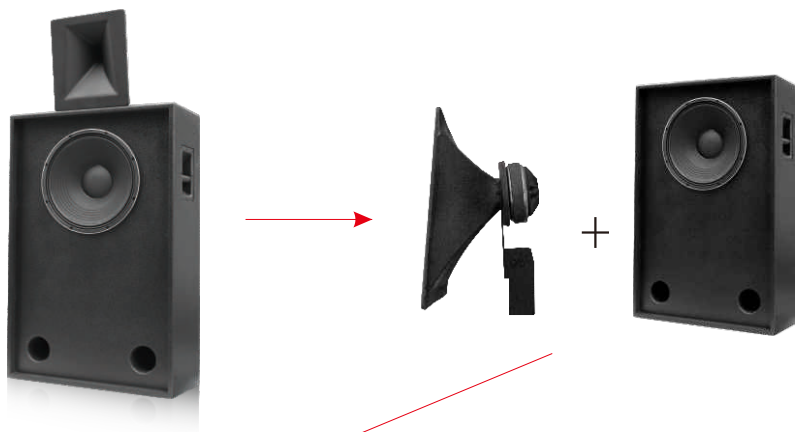


SPECIFICATIONS

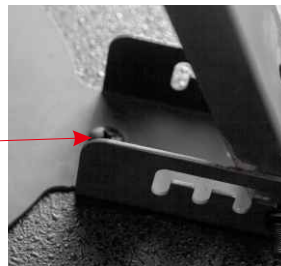
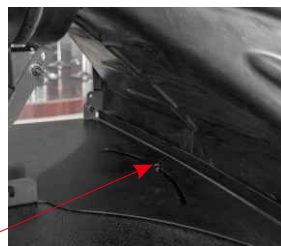
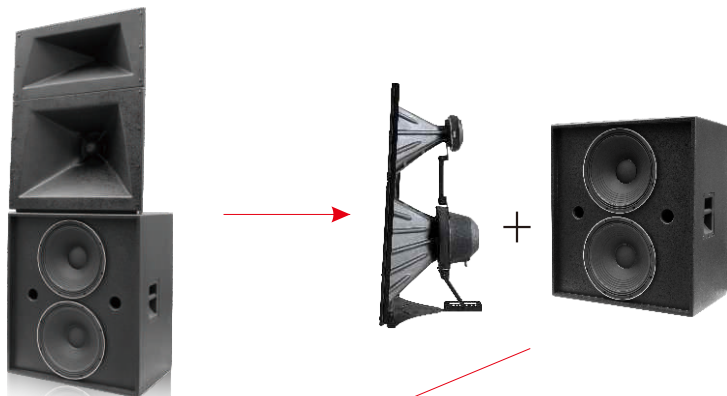
Frequency Response	50Hz-20KHz
Long-term Power (RMS)	200W
Directivity Angle	H100°*XV90°°
Crossover Frequency	2.5KHz
Sensiticity	94dB
Impedance	8 Ω
Connection	Clip line
Dimensions(WxDxH)	460X462.2X256MM
Low	10 INx1 (260mm)
High	1.5 INx1 (34mm)
N.W	13.4Kg



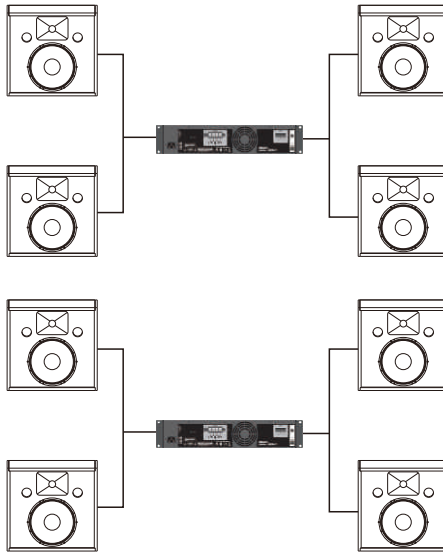
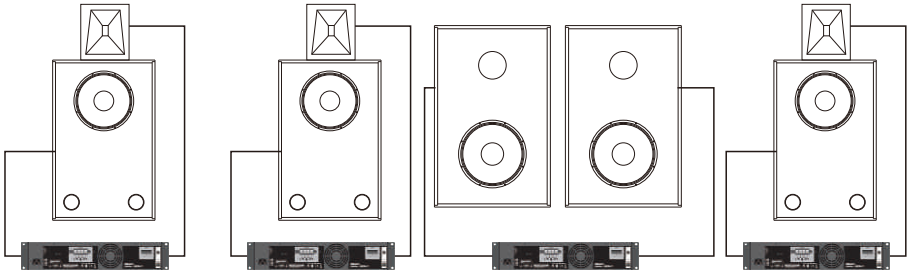
HOW TO CONNECT:



HOW TO CONNECT:

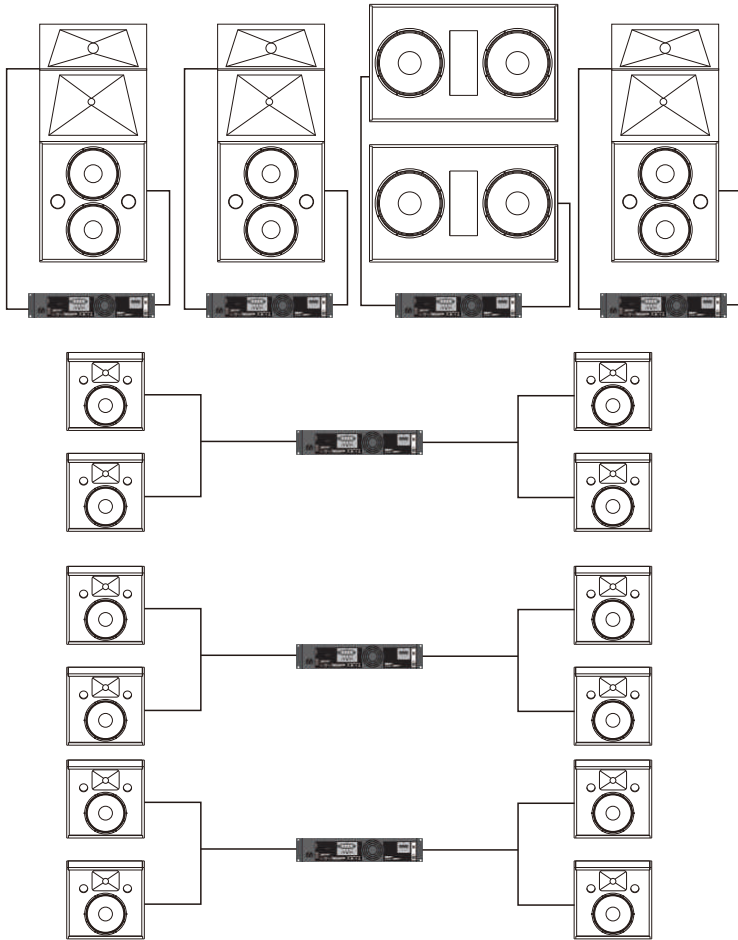


About 60 seat luxurious digital cinema sound reproduction system connection diagram



Configuration Descriptions	Audio Processor	1
	Main channel speaker	3
	Subwoofer	2
	Surround speaker	8
	Amplifier	6
	Power timing device	1
	Signal cable	Optional
Application	Suitable for about 60 seat luxury cinema	

About 120 seat luxurious digital cinema sound reproduction system connection diagram



Configuration Descriptions	Audio Processor	1
	Main channel speaker	3
	Subwoofer	2
	Surround speaker	12
	Amplifier	7
	Power timing device	1
	Signal cable	Optional
Application	Suitable for about 120 seat luxury cinema	